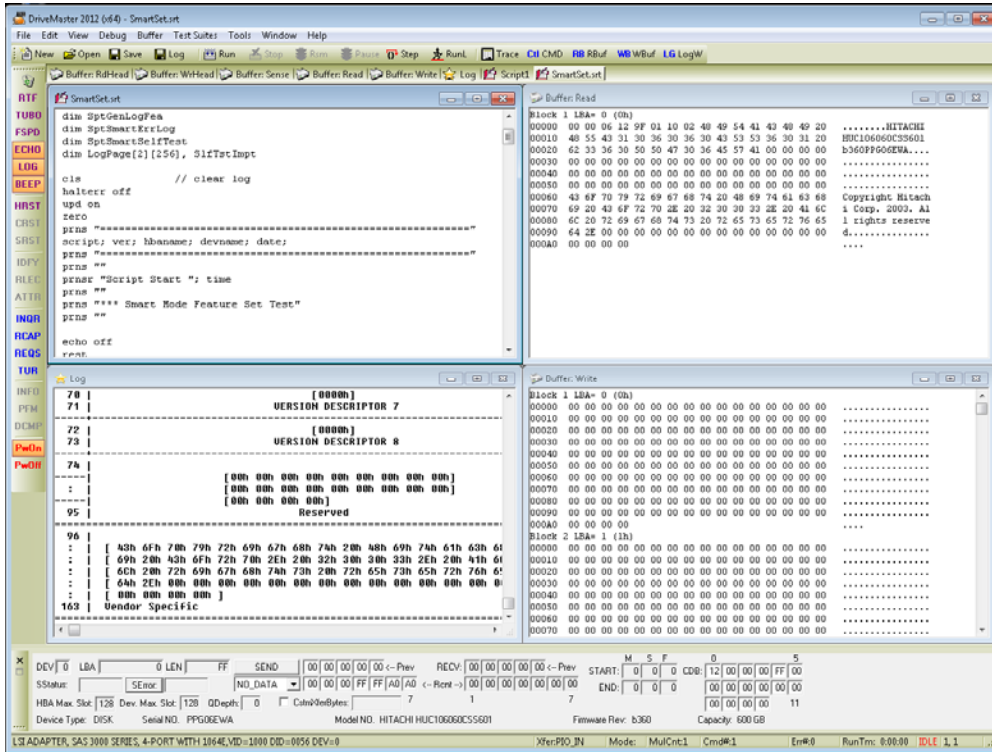




DriveMaster 2012 Enterprise SAS/FC

Serial Attached SCSI (SAS) & Fiber Channel (FC) Testing Software



DriveMaster 2012 Enterprise SAS/FC Interface

DriveMaster 2012 Ent SAS/FC Applications

- Command function testing
- General/Overlapped read/write testing
- Mode page testing
- Log page testing
- T10 DIF testing
- Support standard & user defined SCSI commands
- External power control of device under test (DUT)

DriveMaster 2012 Ent SAS/FC New Features

- **New Commands**
- ACCESS CONTROL IN
- ACCESS CONTROL OUT
- COMPARE AND WRITE
- EXTENDED COPY
- GET LBA STATUS
- MANAGEMENT PROTOCOL IN
- MANAGEMENT PROTOCOL OUT
- RECEIVE COPY RESULTS
- REPORT REFERRALS
- UNMAP
- **New Variables**
- ANCHORE • UNMAP

DriveMaster 2012 Ent SAS/FC Hardware Platform

- **Adaptec 3405**
- **ATTO SAS H680**
- **LSI SAS**
 - 1064 • 1064E • 1068 • 1068E
 - 1078 • 2008 • 2108 • 2208 • 2308
 - 9211 • 9240 • 9260
- **Marvell SAS**
 - 6320 • 6340 • 6440 • 6445
 - 6480 • 6485 • 9445 • 9480 • 9485
- **LSI FC**
 - 919X • 929X • 939X • 949X
 - 949E
- **QLogic FC**
 - 2432



DM 2012 Ent SAS/FC Command Control Panel

Command Control Panel

SCSI Primary Commands | SCSI Block Commands I | SCSI Block Commands II

Transfer Length

INQUIRY PageCode EYPD

MSENSE 6 DBD LLBA PageCtrl

MSENSE 10 PageCode SubPage

MSELECT 6 PageFmt SavePage

MSELECT10

PageCode SubPage PC

LOG SENSE PPC SP PmPointer

LOG SELECT PCR SP

RD BUFFER Mode Buffer ID

WR BUFFER Buf Offset

SEND DIAG PF SelfTst DevOffL UnitOffL

RCV DIAG PageCode PCV

RPT DEVID RD MEDIA SN RPT TSTAMP RPT PRIOR RPT PTGRP

SET DEVID RPT LUNS SET TSTAMP SET PRIOR SET PTGRP

SCSI Primary Commands Panel

Command Control Panel

SCSI Primary Commands | SCSI Block Commands I | SCSI Block Commands II

Loop Count (Dec) Infinite

RD CAP 10 LBA (Hex) LENGTH (Hex) PMI

RD CAP 16

READ 6 Start LBA(Hex) End LBA(Hex) BLK(Hex) DPD

READ 10

READ 12 RDPROTECT GROUPNO. FUA FUA_NV

READ 16 Random Sequential Fixed

Data Pattern

WRITE 6 Start LBA(Hex) End LBA(Hex) BLK(Hex) DPD

WRITE 10

WRITE 12 WRPROTECT GROUPNO. FUA FUA_NV

WRITE 16 Random Sequential Fixed CMP

WR SAME 10 Start LBA(Hex) End LBA(Hex) BLK(Hex) PBDATA

WR SAME 16 Random Sequential Fixed LBDATA

WRPROTECT GROUPNO.

WR SAME 16

SYNCACHE 10 LBA (Hex) LENGTH (Hex) GROUPNO. SYNC_NV

SYNCACHE 16

START STOP PWR IMM LoE START

SCSI Block Commands I

Command Control Panel

SCSI Primary Commands | SCSI Block Commands I | SCSI Block Commands II

Loop Count (Dec) Infinite

FMT UNIT FmtCode(Hex) FMTINFO RTO_REQ LONGLIST

RDDETECT10 FmtCode(Hex) LENGTH FMTDATA CMLIST

RDDETECT12

REASSIGN LongLBA LongList

PREFETCH10 LBA (Hex) LENGTH GROUPNO. REQ_PLST REQ_GLST

PREFETCH16

RDLONG 10 LBA(Hex) XFERLEN IMM

RDLONG 16

WRLONG 10 LBA(Hex) XFERLEN CORRECT PBLOCK

WRLONG 16

WR & VFY 10 Start LBA(Hex) End LBA(Hex) BLK(Hex) DPD

WR & VFY 12

WR & VFY 16 WRPROTECT GROUPNO. Pattern

VERIFY 10 Start LBA(Hex) End LBA(Hex) BLK(Hex) BYCHK

VERIFY 12

VERIFY 16 WRPROTECT GROUPNO. Random Sequential Fixed BYCHK

SCSI Block Commands II